



2910.0



2001

# directory of census statistics



Final Edition

# Contents

Introduction .....	1
Library Extension Program .....	3
Census on the Internet .....	4
Reference Products .....	8
Information Papers .....	11
Census Statistical Publications .....	14
Estimated Resident Population Publications .....	20
Geographic Products .....	22
Key Census Electronic Products .....	25
Community Profiles .....	30
Information Consultancy .....	34
2001 Census Data Items .....	36
2001 Geographic Structure .....	45
Common Census Terms .....	46
Release Dates .....	50

# Introduction

## Overview of the Census

The Census of Population and Housing is the largest statistical collection undertaken by the Australian Bureau of Statistics (ABS). For the 2001 census, over 30,000 collectors delivered and collected census forms for approximately 9 million households.

The census aims to take a “snapshot” of Australia every five years – not only counting the population, but collecting information on the social, economic and housing characteristics of Australian society.

The wealth of information collected through the census is a valuable asset for all Australians.

Census information is vital to supporting the planning, administration, policy development and evaluation activities of government, business, researchers and community users.

## This Directory

*The 2001 Directory of Census Statistics* is a reference to the range of products and services developed from the information collected during the last census, held on 7 August 2001. This Directory has been produced to help users find census information easily.

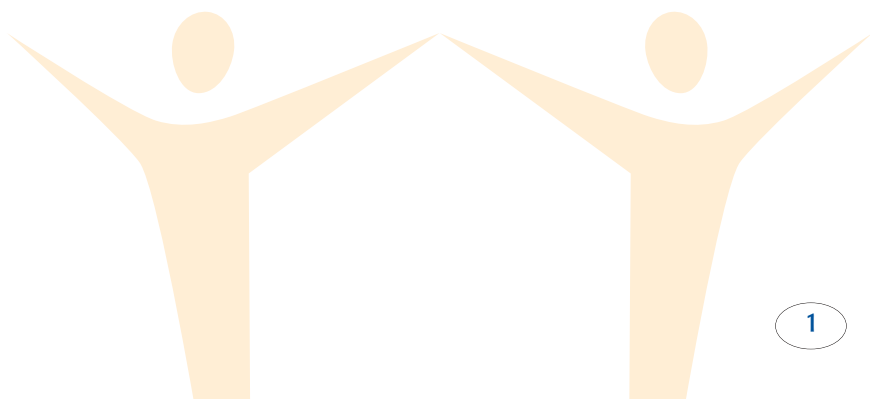
This information includes:

- detailed product descriptions and prices where applicable
- release dates for 2001 census products
- an index of all census data items available
- explanations of common census terms
- relevant contact details

## Turning the Data into Information

The ABS produces a variety of products and services designed to provide all Australians with relevant and meaningful information from the census.

Many census products and services are available “off-the-shelf” including hard copy publications, statistical profiles and electronic products. An extensive amount of census data is also available via the ABS web site. The ABS publishes the most sought after data to meet the most popular demands of the community. ABS Information Consultancy can assist those seeking specific census information not covered by standard outputs. More information on the ABS Consultancy Services are provided on page 34.



## ABS web site

The ABS web site provides more census data and supporting information than ever before. People have convenient access to a large range of 2001 census products and services via the Internet and delivery will be aided by email.

For more detailed information regarding the web site, see the Census on the Internet section on page 4.



## Two Phase Release Strategy

Due to the enormous task associated with processing 11 million census forms, the ABS adopted a two phase release strategy. This allowed census information to be in the public domain as early as possible. The first release, which occurred in June 2002, included variables that were relatively straight forward to process. The second release of data, as of November 2002, involved the processing of the more complex variables.

The support from the wider community in relation to the early release of census data has been favourable, and the ABS will endeavour to improve even further on the delivery of data in future censuses without impacting the quality of the data. The listing of release variables are provided on pages 36-37 (see the 2001 Census Data Items section).

### Terms and Abbreviations used in this Directory

<b>Hardcopy:</b>	A printed publication or paper
<b>Electronic:</b>	Sent via email or on disk
<b>cat. no.</b>	Catalogue number
<b>NA:</b>	Not applicable
<b>POA:</b>	Price on Application
<b>TBA:</b>	To be advised

# ABS Library Extension Program

The **ABS Library Extension Program** is a national partnership program between the ABS and Australian libraries.

Established in 1991, the Library Extension Program (LEP) is an important part of the Bureau's commitment to enabling free community access to ABS statistics. It is a free service to libraries.

Over 500 libraries around Australia are members of the LEP. These include public libraries, TAFE and university libraries as well as the National Library, all the State Libraries and the Parliamentary Libraries. These libraries receive all standard census publications. In addition to census

publications, eligible libraries also receive the specially developed library product, CLIB 2001. CLIB is available both on CD-ROM and as a limited access web product (See section on CLIB 2001 on page 5).

As well as CLIB, eligible libraries are also provided with Statistical Local Area maps on CD-ROM, showing Collection District boundaries, for all of Australia. Around 1,000 libraries have received CLIB. The current list of LEP member libraries can be found on the LEP pages of the ABS web site [www.abs.gov.au](http://www.abs.gov.au) or you can phone the National Information and Referral Service on **1300 135 070**.



# Census on the Internet

*A major thrust of the 2001 Census Output Strategy was making more extensive use of the Internet and email in disseminating statistics to the community. For the 2001 census, more data has been made available free of charge on the web site than ever before.*

## What's on the web?

A great deal of census data is easily accessible on the web site via the use of “drill-down” menus, map interface navigation and links to reference material.

- *Selected Social and Housing Characteristics* (cat. nos. 2015.0–8)
- *Selected Education and Labour Force Characteristics* (cat. nos. 2017.0–8)
- *Selected Characteristics for Urban Centres/Localities* (cat. nos. 2016.0–7)

## Basic Community Profiles

<b>cat. no.:</b>	2001.0
<b>Media:</b>	ABS web site
<b>Cost:</b>	Varies according to level
<b>Released:</b>	June 2002 (release 1) November 2002 (release 2)

The ABS web site provides access to the Basic Community Profiles (BCPs) for all geographic levels in the Australian Standard Geographical Classification (ASGC).

These profiles are available free of charge down to the Statistical Local Area (SLA) level of the main ASGC, all other geographic levels are available at a nominal charge.

## Census Publications Main Findings

The ABS web site also provides free of charge the main findings from the publications series:

A more detailed description of the contents of these publications can be found in the Statistical Publications series on page 14.

The complete range of standard products including census publications and the Community Profile Series are also available for purchase in their entirety via the ABS web site (see Electronic Availability of Census Data on page 6).

## Census Snapshots



<b>cat no.:</b>	2046.0.55.001
<b>Media:</b>	ABS web site
<b>Cost:</b>	Free on web site
<b>Released:</b>	June 2002 (release 1) November 2002 (release 2)

Developed with occasional users and the media in mind, Census Snapshots provide readily accessible summary information for selected areas free of charge via the ABS web site. This summary information is extracted from BCP tables and can be

readily adapted for use in reports or used simply as a ready reference. Some time series information is also provided for comparison of the characteristics of selected areas over time.

Access to Census Snapshots is very simple and is by way of drill-down area names or map interface enabling users to select areas of interest. Snapshots are available for the geographic areas of:

- Australia
- States and Territories
- Capital City Statistical Divisions
- Statistical Local Areas

A 1901 Census Snapshot for all of Australia is also available in celebration of the Centenary of Federation.

## CLIB 2001 – Census Data in Your Library

<b>cat. no.:</b>	2024.0.30.001
<b>Media:</b>	CD-ROM/ABS web site
<b>Cost:</b>	Free to eligible public libraries
<b>Release Date:</b>	Final Release: September 2003

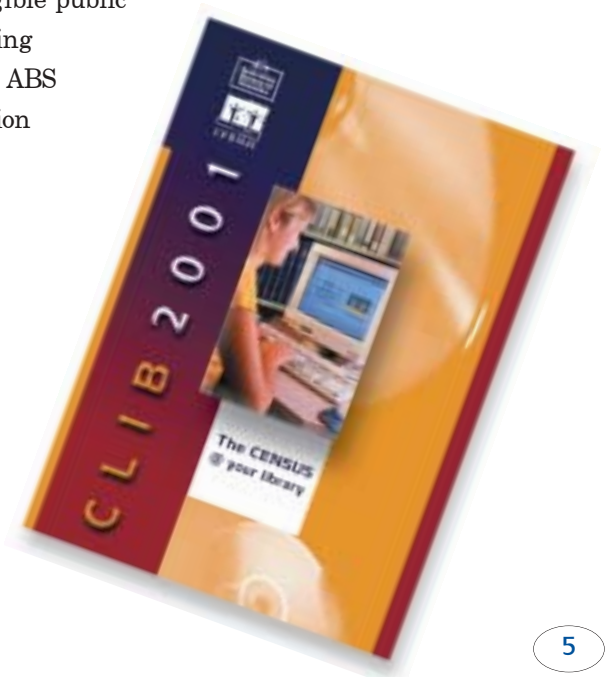
CLIB provides library patrons with a large volume of tabulated information to suit most research purposes. CLIB software allows users to access, display and print the data. The interface is easy to use and provides flexible topic and area search facilities including drill-down area name and map selections. Supporting conceptual information and a streamlined printing facility are also provided.

Release two of CLIB 2001 was made available for all libraries associated with the LEP program in April 2003. Release two includes all Release one content as well as the second release of tables from the Basic Community Profile and Indigenous Profile, Release two Classification Counts and the Time Series Profile.

The final release of this product will be made available in November 2003 and contains:

- Community Profile Series which consists of:
  - Basic Community Profile
  - Indigenous Profile
  - Time Series Profile
  - Usual Residents Profile
  - Expanded Community Profile
  - Working Population Profile
- Classification Counts
- 2001 Census Dictionary
- On-line help
- Drill-down map interface
- View and print functionality

CLIB 2001 is supplied free of charge to eligible public libraries including members of the ABS Library Extension Program (LEP).





## Census Table Specification Service

The Census Table Specification Service (CTSS) was developed to allow users to design their own customised tables. The service allows users to experiment with different classification presentations to develop the table framework required.

The software provides functionality which includes easy to use “drag and drop” functionality and indicative costing. Table specifications can then be forwarded to the ABS via an email attachment for inserting data values in the table shell and validating results. Users will then be contacted to confirm the final specifications and will be advised of final costs before the tables are processed and delivered.

The CTSS software can be downloaded to users’ desktops from the free CD-ROM product *The Census Guide*, which is available by forwarding your postal details to [census.software@abs.gov.au](mailto:census.software@abs.gov.au).

## Reference Information

The census reference products are important tools in promoting a greater understanding and assisting a more informed use of 2001 census data. Reference products available on the census pages of the ABS web site include:

- *Directory of Census Statistics*
- *2001 Census Dictionary* (cat. no. 2901.0)
- Census Papers
- Census Fact Sheets
- *Statistical Geography Volume 1* (cat. no. 1216.0)
- *How Australia Takes a Census* (cat. no. 2903.0)
- Other Information Papers – including technical papers

For more information regarding census reference products, see the Reference Products section on page 8.

## Electronic Availability of Census Data

There are two methods available to access ABS statistics electronically in a timely and convenient manner – AusStats and e-commerce. AusStats is a subscription service which allows users to download census and other ABS standard products from the Internet. Publications, datasets and time-series tables can also be downloaded through the e-commerce facility on the ABS web site.

As census data are released, AusStats subscribers and e-commerce users will be able to access:

- census Community Profile Series and Classification Counts down to the lowest geographic levels available
- census statistical and reference publications
- census hardcopy maps
- a number of specialised multi-dimensional datasets in SuperTABLE format

AusStats is an appropriate access solution for individuals and organisations who use standard census products regularly. More information on this service can be obtained by calling the National Information and Referral Service on 1300 135 070 or emailing [client.services@abs.gov.au](mailto:client.services@abs.gov.au).



## Other Valuable Information Sources

### Census Email Service

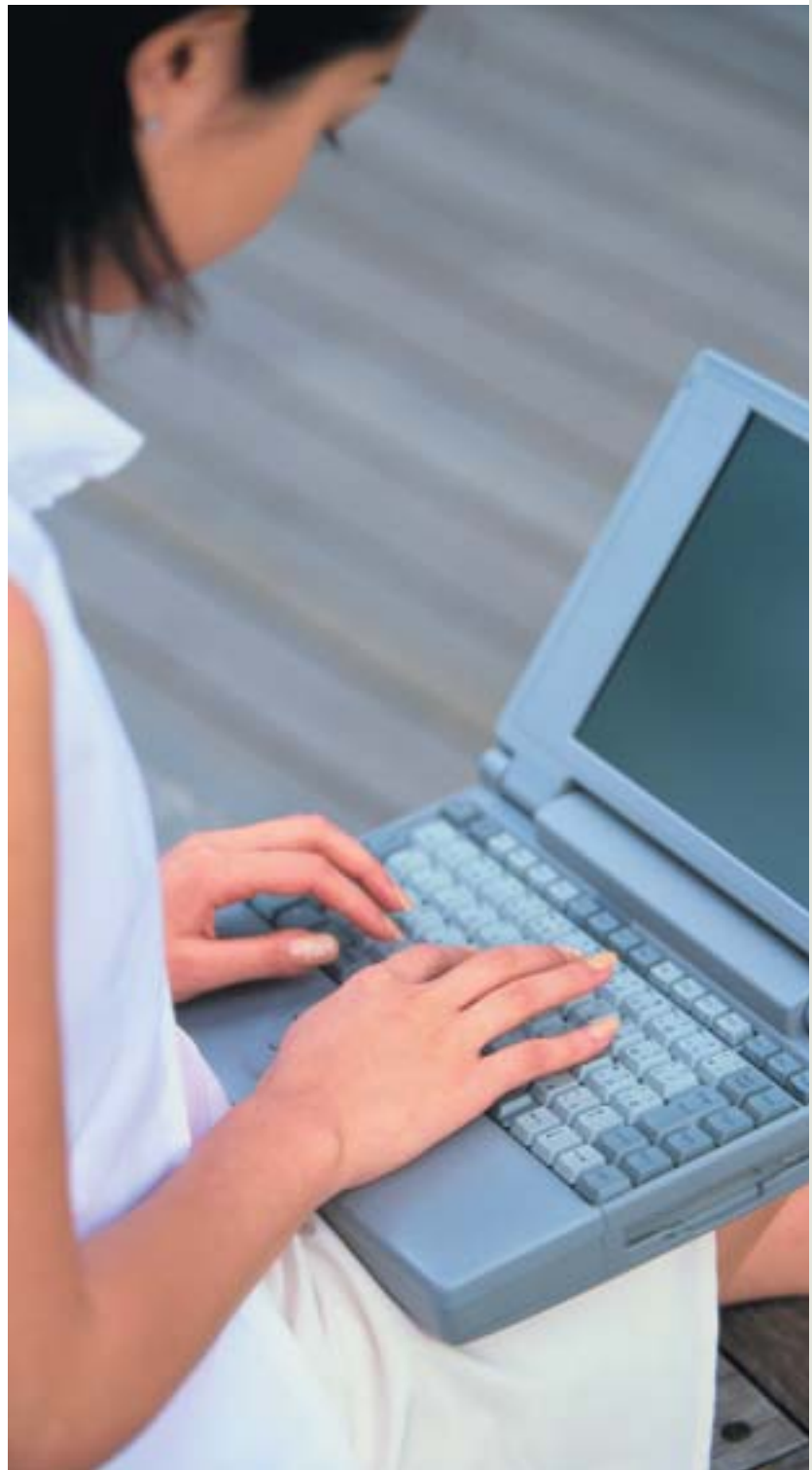
For the 2001 census, the ABS developed an email service that broadcasts messages about census products and data issues providing users with the most up-to-date information as it becomes available. This service has benefited large numbers of people from all areas of government and business. Users can register for this service by emailing **census.users@abs.gov.au** with 'add to census email' in the subject heading. Registration can be cancelled at any time.

### Product Briefs

Product Briefs were developed to provide information on the content and design of census products. They also indicate the output format and medium, release dates and prices for all 2001 census releases. The 2001 census Product Briefs are available from the census pages of the ABS web site ([www.abs.gov.au/census](http://www.abs.gov.au/census)).

### General Information

Recent releases, timetables and other materials relating to the 2001 census are made available on a regular basis via the census pages on the ABS web site. The "Census Products and Services" and "Census Information" categories contain the latest information available. Access to selected free 1996 Census data is also provided on the ABS web site.



# Reference Products

## – making sense of the census

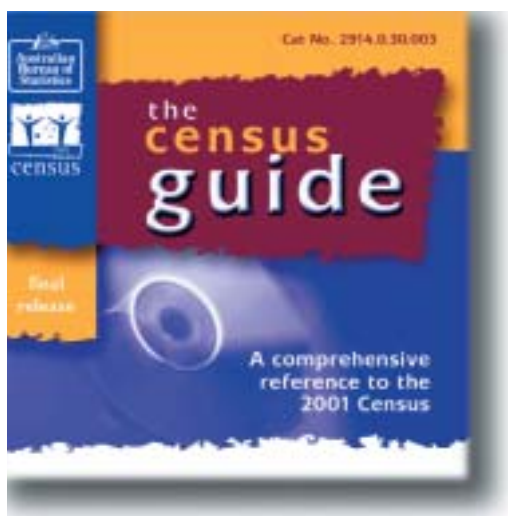
*The ABS developed a wide range of reference products to assist with your understanding of census statistics. The products contain detailed information about concepts, definitions and geographic regions used in the census.*

### The Census Guide



<b>cat. no.:</b>	2914.0.30.001
<b>Media:</b>	CD-ROM
<b>Cost:</b>	Free
<b>Release Date:</b>	Final Release–Oct 2003

*The Census Guide* is a CD-ROM product designed for the 2001 census, which contains a wide range of census reference information. It has been developed as a convenient tool to facilitate a greater understanding and more informed use of census data.



There will be a total of three releases of *The Census Guide*. The final release will contain:

- 2001 Census Dictionary
- Directory of Census Statistics
- Information Papers
- the Census Table Specification Service (CTSS) software to assist people in ordering census customised tables
- Product briefs
- demonstrations of census products (CDATA 2001, CLIB 2001 and SEIFA 2001)
- Census Fact Sheets
- a selection of free 2001 Census Basic Community Profile data
- a selection of free 2001 Census Indigenous Profiles data
- a selection of free 2001 Census Snapshots data
- information about various census publications including the Social Atlas Series.

*The Census Guide* provides users with access to census information and web site listings through a simple and intuitive interface.

To order your free copy of *The Census Guide*, call **1800 813 939** or send your postal details to [census.users@abs.gov.au](mailto:census.users@abs.gov.au).

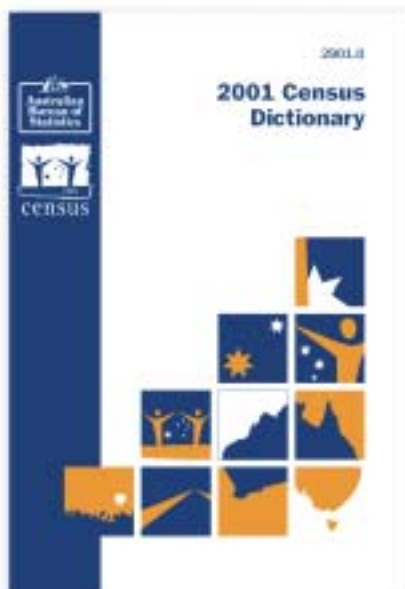
## 2001 Census Dictionary

<b>cat. no.:</b>	2901.0
<b>Media:</b>	Printed publication ABS web site
<b>Cost:</b>	\$32.00 (printed publication) Free on the web site
<b>Release Date:</b>	April 2001

The *2001 Census Dictionary* is a comprehensive reference guide to assist users to determine their 2001 census output requirements and to better understand the conceptual issues.

The Dictionary contains information about 2001 census classifications, including new topics introduced in the 2001 census and changes that have occurred since the 1996 census. It also includes definitions of census terms and explains the concepts relevant to census collection, processing and output of data.

The 2001 Census Dictionary is an invaluable reference source for all census data users.



## Geographical Publications

Census data are available for a wide variety of geographic areas. *Statistical Geography: Volumes 1–3* describe the geographical classifications used to disseminate census data. They include essential background information, names and codes of the geographical areas. The publications will assist census users to identify the level of geography that best suits their needs.

### Statistical Geography: Volume 1 Australian Standard Geographical Classification (ASGC) 2001

<b>cat. no.:</b>	1216.0
<b>Media:</b>	Printed publication ABS web site
<b>Cost:</b>	\$59.00 Printed publication
<b>Release Date:</b>	2002 Release: September 2002 2003 Release: September 2003

The ASGC is the standard geographical classification used for disseminating ABS statistics. *Statistical Geography: Volume 1* describes the structure of the ASGC as at July 2001, including the new Remoteness Areas and enhanced Section of State structures. It explains the hierarchical relationships within each of the seven ASGC structures.

The publication consists of several parts including discussion about the concepts, design and statistical purpose of the ASGC and lists of the codes and names of all the spatial units that make up the structures. It includes maps showing the main geographical areas for Statistical Divisions and Statistical Sub-divisions within each State and Territory.

One important part of the publication is the explanation of changes that have occurred between the 1996 census edition and the current edition. This information is essential for the accurate comparison of small area data between censuses.

This information is also available in the Statistical Concepts Library on the ABS web site (see About Statistics button the main page of the ABS web site).

**Statistical Geography: Volume 2**  
Census Geographic Areas,  
Australia, 2001

**cat. no.:** 2905.0  
**Media:** Printed publication  
ABS web site  
**Cost:** \$29.00  
**Release Date:** July 2002

The ABS disseminates census data for a number of geographic areas that are outside the scope of the ASGC. These areas, as described in *Statistical Geography: Volume 2 Census Geographic Areas*, are derived by aggregating Collection Districts (CDs) to form new areas. These areas include Commonwealth and State Electoral Divisions, Postal Areas, State Suburbs and Indigenous Geography.

**Statistical Geography: Volume 3**  
Australian Standard Geographical  
Classification (ASGC) Urban  
Centres/Localities, 2001

**cat. no.:** 2909.0  
**Media:** Printed publication  
ABS web site  
**Cost:** \$23.00  
**Release Date:** September 2002

*Statistical Geography: Volume 3* describes the Urban Centres and Localities (UC/Ls) structure of the ASGC. This publication describes the criteria used to define UC/Ls and lists their names and codes.

# Information Papers

*The Census is the largest statistical collection undertaken by the ABS, the results of which contribute to the planning of many private and government organisations. As such, there is a great deal of curiosity and interest about the collection, processing and dissemination of census data. To better inform the community about some of the issues, the ABS has produced a range of papers on some of the 'most asked about' aspects of the 2001 census.*

## How Australia Takes a Census

<b>cat. no.:</b>	2903.0
<b>Media:</b>	Printed publication ABS web site
<b>Cost:</b>	\$10.00 (printed publication) Free on the web site
<b>Release Date:</b>	October 2000

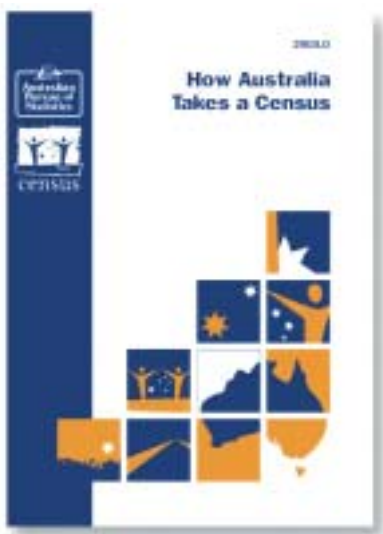
*How Australia Takes a Census* (HATAC) provides an insight into the conduct of the 2001 census. Covering the planning, collection and output processes, readers are also provided with a history of census

taking in Australia, beginning with the first musters in 1788. New issues, such as the retention of census forms and the latest forms processing technology, are included along with copies of the 2001 Census Household Form and the Guide.

## Census Papers

<b>cat. no.:</b>	N/A
<b>Media:</b>	Hardcopy/ABS web site
<b>Cost:</b>	Free
<b>Release Date:</b>	Progressively from 2002

Australia's census is recognised internationally for its quality. The Census Program undertakes a detailed analysis of various aspects of the census to help maintain and improve data integrity. These investigations examine how issues such as form design, collection procedures and data processing impact on the quality of output. Details of this analysis are available through a series of papers.



The following papers have been released:

- Income
- Computer and Internet Use
- Housing
- Ancestry – Detailed Paper
- Ancestry – First and Second Generation Australians
- 2001 Form Design Testing Paper
- Report on Testing of Disability Questions for Inclusion in the 2001 census
- Digital Geography Technical Information Paper
- Census Data Quality – Undercount

As papers become available they can be found on the ABS web site.

## Census Fact Sheets

Census Fact Sheets are designed to assist in the use and interpretation of census data. They provide a summary of conceptual and data issues, and changes that have occurred since the last Census. The fact sheets listed below have all been released and can be accessed via the ABS web site [www.abs.gov.au/census](http://www.abs.gov.au/census):

### Topics

- 2001 Census Miscellaneous Collection Districts
- Ancestry
- Australian Standard Geographical Classification and Census Geographic Areas – Diagram of Structures
- CDATE 2001 (Counts of ASGC/Census Specific Geographic Areas)
- Census Topic Index
- Changes to Geographic Areas Between Censuses

- Classification of Pentecostal Religious Affiliation in the 2001 Census
- Computer and Internet Use
- Confidentiality of Census Output
- Counts for ASGC and Census Specific Areas
- Education – Changes for 2001 Census
- Effect of Census Processes on Non-response Rates and Person Counts
- Geocentric Datum of Australia and ABS Boundaries
- Income Imputation
- Internal Migration
- Journey to Work
- Labour Force Status: Comparing Census and Survey Data
- Mnemonics in Alphabetical Order
- Non-response Rates [Australia and each State/Territory separately]
- Number of Charged Categories for Major Classifications
- Population Measures
- Postcodes and Census Data
- Summary of Changes to Variables 1996 to 2001
- Usual Residence

## Census Update

<b>cat. no.:</b>	N/A
<b>Media:</b>	ABS web site
<b>Cost:</b>	Free
<b>Release Date:</b>	3-4 issues per year

*Census Update* is an interesting, informative magazine discussing census products, services and related topics. It keeps users up-to-date with general census news, as well as specific conceptual and processing issues. *Census Update* informs users of the impending release of products and services and provides case studies of effective use of census data.

If you would like the convenience of receiving *Census Update* to your desktop, simply register your details via the census.users alert system. By sending an email to [census.users@abs.gov.au](mailto:census.users@abs.gov.au) and typing "add to census email" in the subject header, you will have *Census Update* delivered directly to you as soon as it is released.



# Census Statistical Publications

*Census publications provide users with easy access to a range of basic census information.*

*The publications available from the 2001 census can be grouped as:*

- *Statistical publications – containing mainly statistical tables with some broad analysis of the statistics presented*
- *Thematic publications – presenting data on a particular theme with substantial analysis and commentary on the data presented*
- *State specific publications – containing census information of interest to a particular state*

*Electronic copies of census publications may be purchased through the National Subscription Service – phone 1300 366 323 – or downloaded via the ABS web site. Printed publications are available via our mail order service.*

## Statistical Publications

### Selected Social and Housing Characteristics for Statistical Local Areas, 2001

<b>cat. no.:</b>	2015.0-8
<b>Media:</b>	Printed publication ABS web site
<b>Cost:</b>	\$28.00 to \$39.00
<b>Released:</b>	National publication: August 2002 State/Territory publications: September 2002

First release census data were launched with the release of *Selected Social and Housing Characteristics, Australia* (cat. no. 2015.0). It contains 2001 census counts and selected person and dwelling characteristics for all Statistical Subdivisions (SSD) and Statistical Divisions (SD) within each state and territory. Comparative data from the 1996 census

are also included at the SD and State/Territory level. This publication also includes the first release Basic Community Profile (BCP) data for Australia and reference maps showing SDs and SSDs in each state and territory.

The state and territory publications are similar to the national publication in their format and content, however data are available down to Statistical Local Area level.



The 2001 census publications have several innovations including:

- comparisons of data from 1901, 1996 and 2001 for Australia, and the states and territories
- comparisons of data from 1996 and 2001 for Capital City Statistical Divisions
- data on personal computer and Internet use in households
- ranked tables for selected characteristics
- person counts on a usual residence basis
- basic family information

NOTE: Data for Christmas and Cocos (Keeling) Islands are included in the Western Australia publication and Jervis Bay is included in the New South Wales publication.

### Selected Characteristics for Urban Centres and Localities, 2001

<b>cat. no.:</b>	2016.0-7
<b>Media:</b>	Printed publication ABS web site
<b>Cost:</b>	\$26.00 – \$32.00
<b>Released:</b>	March 2003

Containing both first and second release data items, this series of publications uses the Urban Centre/Locality (UC/L) geographical classification. The UC/L classification is based on population density with Urban Centres containing 1,000 or more people and Localities containing 200 to 999 people.

Each table in *Selected Characteristics for Urban Centres, Australia* (cat. no. 2016.0) shows the 200 top ranked Urban Centres for the selected data item. Some examples include rankings by population size, population growth, and proportion of employed persons.

The state and territory publications primarily consist of comparative tables of person, family and household characteristics for UC/L and Section of State geography. In addition, a number of ranked tables similar to those contained in the national publication are included.

NOTE: Data for the Australian Capital Territory is included in the New South Wales publication and Christmas and Cocos (Keeling) Islands are included in the Western Australian publication.



### Selected Education and Labour Force Characteristics for Statistical Local Areas, 2001

<b>cat. no.:</b>	2017.0-8
<b>Media:</b>	Printed publication ABS web site
<b>Cost:</b>	\$28.00 – \$44.00
<b>Released:</b>	February 2003

This series of publications provides information on selected education and labour force characteristics for those people aged 15 years and over. They include comparative tables, some ranked tables, second release Basic Community Profile data and reference maps. Data in the national publication are produced down to the Statistical Subdivision level, while data in the state/territory publications are available down to Statistical Local Area level.

NOTE: Data for Christmas and Cocos (Keeling) Islands are included in the Western Australia publication and Jervis Bay data are included in the New South Wales publication.

### Thematic Publications

#### Selected Social and Housing Characteristics for Suburbs and Postal Areas, Western Australia, 2001

<b>cat. no.:</b>	2029.5
<b>Media:</b>	Printed publication ABS web site
<b>Cost:</b>	\$27.00
<b>Released:</b>	December 2002

This publication provides selected social and housing characteristics for all “CD-derived” suburbs in the Perth/Mandurah region and all “CD-derived” postal areas in Western Australia at the time of the 2001 census. Some ranked tables are also included.

#### Social Atlas Series

<b>cat. no.:</b>	2030.1-8
<b>Media:</b>	Printed publication ABS web site
<b>Cost:</b>	\$55.00 – \$75.00 \$400 complete set of all 8 Atlases
<b>Released:</b>	February 2003

The Social Atlas series are a popular part of the census product range. Featuring colour thematic maps, they depict the population, ethnicity, education, family, income, labour force and dwelling characteristics of each capital city in Australia. Each Social Atlas also includes maps that highlight attributes unique to that particular capital city. A brief commentary explaining the main features and characteristics accompanies each map.

If you purchase all eight Atlases, you will receive a special presentation folder to highlight and protect your asset.



## Census of Population and Housing: Australia in Profile – A Regional Analysis

<b>cat. no.:</b>	2032.0
<b>Media:</b>	Printed publication ABS web site
<b>Cost:</b>	\$43.00
<b>Released:</b>	December 2003

*Australia in Profile – A Regional Analysis* presents commentary and data on a number of key social indicators from the 2001 census, with a focus on regional distribution and comparisons. Topics covered include cultural diversity, living arrangements, education, work and housing. A new feature of this edition is the inclusion of three regional case studies, which draw together a wide range of data to describe the particular characteristics of each region. The publication also includes ranked tables, maps, graphs and SEIFA data and is designed for the general user of census data.

## Population Growth and Distribution, Australia, 2001

<b>cat. no.:</b>	2035.0
<b>Media:</b>	Printed publication ABS web site
<b>Cost:</b>	\$34.00
<b>Released:</b>	May 2003

*Population Growth and Distribution, Australia* examines the demographic changes that have taken place in Australia between 1996 and 2001. It focuses on the growth, location and mobility of the population at the national, state and regional levels. Information is presented on the characteristics and volume of migration, both within states, and between states.

The effect of these movements on population growth in selected regions of Australia is also examined. Final estimates of the resident population of Statistical Local Areas (SLA) as at June 2001, 1996 and 1991 are included, as well as estimates of the Indigenous population as at June 2001.

### Population Distribution, Aboriginal and Torres Strait Islander Australians, 2001

<b>cat. no.:</b>	4705.0
<b>Media:</b>	Printed publication ABS web site
<b>Cost:</b>	\$32.00
<b>Released:</b>	June 2002

This publication contains 2001 census counts of the Indigenous population for small areas, ATSI Regions and at the State/Territory and Australia levels. Estimated Resident Indigenous Population data by state and territory are also included. Data from the 1996 census are included for comparison purposes.

### Population Characteristics, Aboriginal and Torres Strait Islander People, 2001

<b>cat. no.:</b>	4713.0
<b>Media:</b>	Printed publication ABS web site
<b>Cost:</b>	\$34.00
<b>Release Date:</b>	To be released in 2003

Focussing on Australia's Indigenous people, this highly informative publication include data on a variety of topics including population growth and distribution, families and housing, education, employment, income and language. Selected data from previous censuses are included for comparison, as well as some data for States/Territories and Remoteness Areas.

Spreadsheets corresponding to tables presented in the national publication are available for Australia, states and territories via the ABS website.

### Australian Census Analytic Program

<b>cat. no.:</b>	2050.0 – 2057.0
<b>Media:</b>	Printed publication ABS web site
<b>Cost:</b>	\$30.00 to \$43.00
<b>Released:</b>	From November 2003

The Australian Census Analytic Program (ACAP) is a collaborative venture between the ABS and selected researchers to provide substantive and in-depth analyses for selected themes, which will often cut across traditional "subject matter" boundaries.

ACAP was introduced to assist and encourage the conduct of issue-driven research on topics critical to the development of Australian society. It is hoped that this will add to the understanding of major socioeconomic trends and issues in Australia, and contribute to the development of Australia's social and economic policy agenda over the next decade.

Publications are due for release between September and December 2003 and aim to promote previously un-revealed information on the selected themes. As part of the project, researchers may rely on sources additional to the 2001 census, including existing academic research or material from other ABS sources.

In 2001 researchers from both government and private sectors were invited to submit research proposals. After conducting evaluation of the proposals, the following research projects were selected:

#### **Counting the Homeless in 2001**

Dr Chris Chamberlain – School of Political and Social Inquiry, Monash University & Mr David MacKenzie – RMIT University

#### **Australia's Most Recent Immigrants**

Professor Graeme Hugo – GISCA, Adelaide University

#### **Digital Divide? Who Uses Computers and the Internet in Australia Today?**

Rachel Lloyd, Ben Phillips & Harry Greenwell – NATSEM, University of Canberra

#### **Factors Underlying Indigenous Labour Force Status, 1981 - 2001**

Dr Boyd Hunter – CAEPR, Australian National University

#### **Ethnic Diversity, Ethnic Intermixture and the Development of "Australian Ancestry"**

Dr Siew-Ean Khoo, Dr Dimitria Giorgas, Dr David Lucas – Research School of Social Sciences, Australian National University

#### **Understanding the Changing Structure of Rural Communities**

Dr Neil Barr – Centre for Land Protection Research, National Resources and Environment Victoria

#### **Australia's Caring Labour Force**

Dr Gabrielle Meagher & Dr Karen Healy – School of Economics and Political Science, University of Sydney

#### **The Emergence of Low Fertility in Australia; Family Formation and Social Characteristics - Release to be advised**

Professor Peter McDonald & Rebecca Kippen – Research School of Social Sciences, Australian National University



# Estimated Resident Population Publications

*The Estimated Resident Population (ERP) is the official population estimate of people living in a particular area. The ERP is based on usual residence census counts and takes account of:*

- *Australian residents who were temporarily absent overseas on census night*
- *underenumeration in the census*
- *backdating the estimates which relate to 7 August 2001 (census night) to 30 June 2001 by using births, deaths and migration data*

*Major products containing ERP data are outlined below*

## Australian Demographic Statistics

<b>cat. no.:</b>	3101.0
<b>Media:</b>	Printed publication (Quarterly)/ABS web site
<b>Cost:</b>	\$24.00 each
<b>Released:</b>	June 2003 – Final edition

The December quarter 2001 issue provides preliminary state and territory ERP by five-year age groups and by sex, based on the 2001 census.

The June quarter 2002 issue provides final state and territory ERP by five-year age groups and by sex based on the 2001 census.

A time series of population estimates, household estimates and data for births, deaths (including infant deaths), marriages, divorces, and interstate and overseas migration are also included.

## Regional Population Growth, Australia

<b>cat. no.:</b>	3218.0
<b>Media:</b>	Electronic
<b>Cost:</b>	\$30.00
<b>Released:</b>	April 2003– 2001 census Edition

The 2001 census edition of this publication provides preliminary ERP totals at the Statistical Local Area (SLA) and Local Government Area (LGA) levels for all of Australia, based on the 2001 census. Estimates of the population at June 1991 and 1996 for the same geographic areas are also included. Regional Population Growth between 1991 and 2001 and 1996 and 2001 is included, highlighting areas with the highest and lowest total population change.

Estimates of the total resident population at SLA level, for June 2001, 1996 and 1991, as well as estimates by age and sex, are available electronically.

## Experimental Estimates and Projections of Indigenous Australians, 1991–2016 (2001 census Edition)

<b>cat. no.:</b>	3238.0
<b>Media:</b>	Printed publication ABS web site
<b>Cost:</b>	\$30.00
<b>Released:</b>	November 2003

*Experimental Estimates and Projections of Indigenous Australians, 1991–2016* provides experimental estimates and projections of the Indigenous population for states and territories, by five-year age groups and sex, based on the 2001 census counts. For ATSI Regions, estimates at June 2001 will be provided along with projections to 2016, given ATSI's agreement to the assumptions involved.

Also included will be estimates and projections for the non-Indigenous population where appropriate; estimates of the Indigenous population based on census years 1986, 1991 and 1996; and separate estimates of the Torres Strait Islander population at June 2001.

Estimates of the June 2001 Indigenous and non-Indigenous resident population at SLA level by age and sex are available electronically.

# Geographic Products

*The 2001 Census Digital Boundaries facilitate the analysis and display of 2001 census statistical data, through their use in various software packages. They include all of the Australian Geographical Classification (ASGC) and Census Geographic Areas.*

*Digital boundaries are supplied as “all points” boundaries in MapInfo Export (.mif/.mid) format. These are suitable for import into geographic information systems and desktop mapping packages.*

*All spatial data released by the ABS after August 2001, is based on the Geocentric Datum of Australia, 1994 (GDA 94). A Census Fact Sheet which gives more details about GDA 94 is available on the web site.*

## ASGC Digital Boundaries, Australia, 2001

cat. no.:	1259.0.30.002
Media:	CD-ROM
Cost:	\$95
Released:	January 2002

Digital boundaries for the 2001 edition of the ASGC. This product includes boundaries for the new Remoteness Areas structure. It does not include Urban Centre and Locality (UC/L) boundaries.

## ASGC Urban Centres and Localities (UC/L) Digital Boundaries, Australia, 2001

cat. no.:	1259.0.30.003
Media:	CD-ROM
Cost:	\$95
Released:	September 2002

Digital boundaries for the 2001 edition ASGC Urban Centres and Localities (UC/L). This product also includes the Section of State boundaries.





## Census Geographic Areas 2001 Digital Boundaries, Australia

<b>cat. no.:</b>	2923.0.30.001
<b>Media:</b>	CD-ROM
<b>Cost:</b>	\$95
<b>Released:</b>	November 2002

This CD-ROM contains digital boundaries for census specific geographic areas which are based upon Collection District (CD) boundaries. These areas include Postal Areas, Suburbs, State and Commonwealth Electoral Divisions, and Indigenous areas. The boundaries contain greater detail than the equivalent 'reduced' boundaries from the 1996 census, and accurately overlay the 2001 census Public Sector Mapping Agency Base Map data.

## Historic ASGC Digital Boundaries, Australia (ASGC Editions 1996 through to 2000)

<b>cat. no.:</b>	1261.0.30.001
<b>Media:</b>	CD-ROM
<b>Cost:</b>	\$95
<b>Released:</b>	April 2002

This is the second issue of this product and the CD-ROM has boundaries for ASGC Editions 1996, 1998, 1999 and 2000. Each ASGC Edition's boundary set includes Local Government Areas (LGAs), Statistical Local Areas (SLAs), Statistical Subdivisions (SSDs), Statistical Divisions (SDs), Statistical Districts and States/Territories. Boundaries of the Collection Districts (CDs), and Urban Centres/Localities (UC/Ls) from the 1996 census edition are also included.



## Reference Maps

Two sets of reference maps are available in hardcopy. They display 2001 census Collection Districts and Statistical Local Areas and are available for purchase from the ABS. A sample of a SLA map has been provided below.

### Collection District Maps, ASGC Edition 2001

**cat. no.:** 2920.0  
**Media:** Hardcopy  
**Cost:** POA  
**Release Date:** January 2002

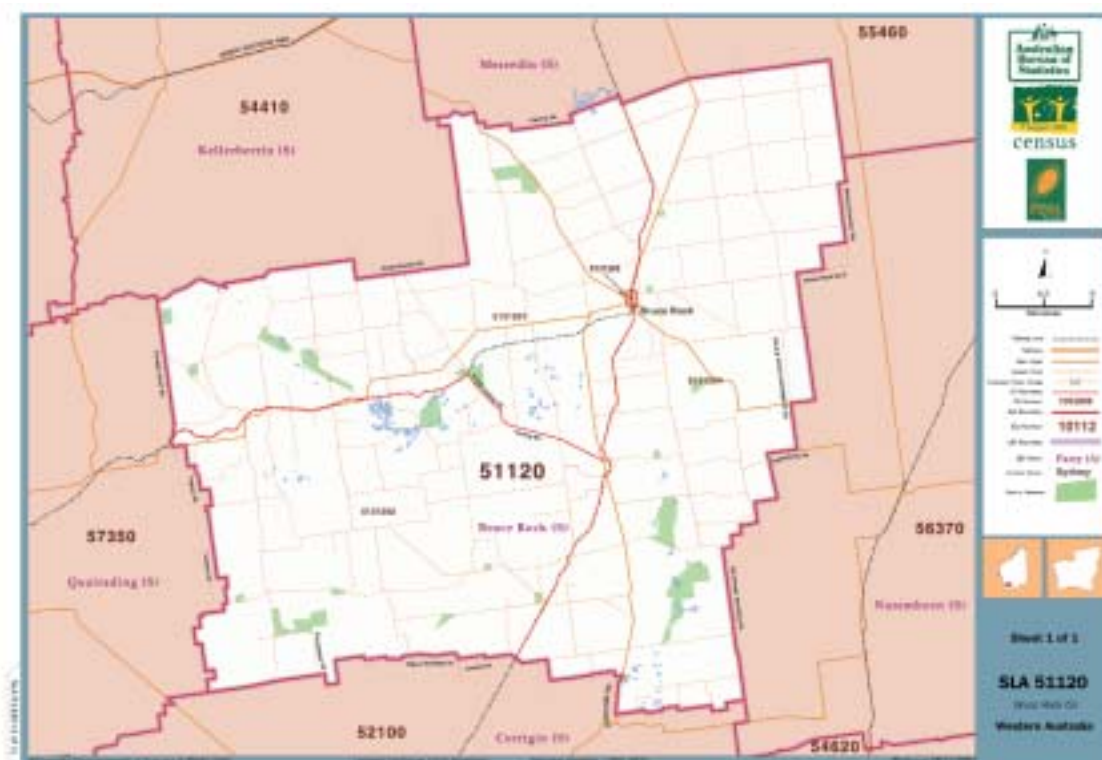
37,209 printed reference maps each showing the boundaries of a single Collection District (CD) are available for purchase. In addition to the boundary of the CD, these full colour maps show roads, rivers, railways, powerlines and a range of other significant features.

Local Government Area (LGA) and State/Territory boundaries are also shown where appropriate. The majority of the maps are printed on an A3 page but a small number are printed on an A2 page.

### Statistical Local Area Maps, ASGC Edition 2001

**cat. no.:** 2920.0.00.001  
**Media:** CD-ROM  
**Cost:** POA  
**Released:** January 2002

These maps each show a single Statistical Local Area (SLA) as at the 2001 Census of Population and Housing. These full colour maps show the SLA, as well as Collection Districts (CD), roads, rivers and other significant features. For each SLA, there is a single overview map showing the whole SLA. For many SLAs there are additional map sheets showing enlargements of selected areas.



Sample of a 2001 Census SLA map

# Key Census Electronic Products

## CDATA 2001

*CDATA 2001 is an information solution developed by the Australian Bureau of Statistics and MapInfo Australia.*

*The CD-ROM product combines the credibility of 2001 census data, with powerful mapping software, so you can have Australian demographic data at your fingertips. It allows you access to the latest figures on Australian society – age, education, housing, income, transport, ethnicity, occupation, making up a series of Basic Community Profiles. This valuable information is available for small areas (Collection Districts) through to complete states, territories and total Australia.*

*CDATA 2001 also contains the digital boundaries used for the census collection, with underlying basic topography such as major roads and rivers. These features allow you to visually display the data in themed reports, maps and graphs.*

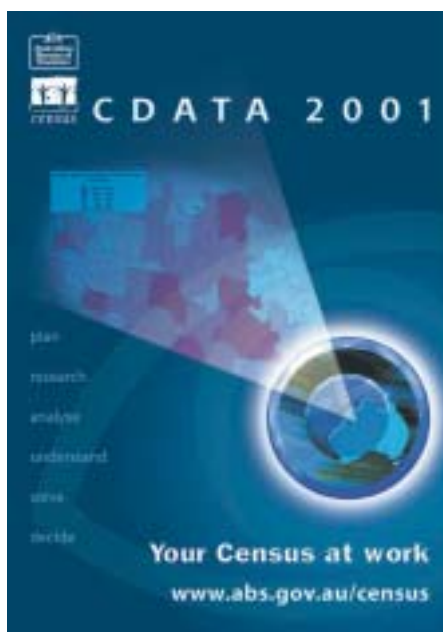
*The 2001 CDATA product, provides two versions:*

- *CDATA 2001 – Full GIS*
- *CDATA 2001 – Quickbuild*

## CDATA 2001 - Full GIS

<b>cat. no.:</b>	2019.0.30.001-8
<b>Media:</b>	CD-ROM
<b>Cost:</b>	Varies according to option (see price table)
<b>Released:</b>	September 2002 (release 1) June 2003 (release 2)

CDATA 2001 – Full GIS is aimed at the expert GIS user who requires detailed spatial data analysis using Structured Query Language (SQL), geocoding and importation of clients' own data. Basic Map data of major roads, rivers and railways plus localities are a standard inclusion with the product. A full MapInfo Professional licence is included in this version.



## CDATA 2001 - Quickbuild

<b>cat. no.:</b>	2044.0.30.001-8
<b>Media:</b>	CD-ROM
<b>Cost:</b>	Varies according to option
<b>Released:</b>	September 2002 (Release 1) June 2003 (Release 2)

CDATA 2001 – Quickbuild has been designed for GIS users with more basic spatial data analysis requirements, allowing users to produce only data reports, graphs and/or maps. The product is aimed at new and intermediate GIS users and contains the same data as CDATA 2001 – Full GIS, but without the data import, geocoding and SQL functions. Basic Map data of major roads, rivers and railways plus localities are a standard inclusion with the product.

CDATA Release 2 contains:

- Complete Basic Community Profile data (at CD level and above)
- 1991, 1996 & 2001 Time Series Profile (at SLA level) on 2001 boundaries
- Additional boundary data (Urban Centre/Locality)
- Interface for all other Community Profiles
- Optional Datapacks – Socio-Economic Indexes for Areas (SEIFA), Detailed Base Map data, Indigenous, Usual Residents, Expanded and Working Population Profiles will be available as separate modules, individually priced, in formats suitable for directly importing into CDATA 2001
- 2001 Census Dictionary in electronic form plus interactive on-line help
- Digital Base Map data
- 2001 Digital Statistical Boundaries

## Your options are open...

If you start with Quickbuild and then decide your requirements would be better satisfied by the Full GIS version – it can be done. To discuss the procedures involved in upgrading to the Full GIS version contact the ABS on 1300 135 070.

## Prices for CDATA 2001 (inc. GST)

Geography	CDATA 2001- Full GIS	CDATA 2001- Quickbuild
Australia	\$ 10,600	\$ 6,300
NSW, Vic. or Qld	\$ 8,500	\$ 5,000
SA or WA	\$ 8,000	\$ 4,500
Tas., ACT or NT	\$ 7,000	\$ 4,000

Discounts are available for bulk purchases. Prices may be subject to change.

## Optional Add-On Datapacks

<b>cat. no.:</b>	2040.0 series
<b>Media:</b>	CD-ROM
<b>Cost:</b>	Varies according to profile
<b>Released:</b>	June 2003 to July 2003

## And you've got more options...

In CDATA 2001 products you have access to the data in the Basic Community Profiles and the Time Series Profile. More value and flexibility can be built into your CDATA product by purchasing additional Add-On Datapacks:

- Working Population Profile
- Usual Residents Profile
- Indigenous Profile
- Expanded Community Profile
- Estimated Resident Population

These profiles have been produced to allow for seamless integration with the CDATA product.

An optional Add-On Datapack containing Detailed Base Map data including streets, town centres, rivers and features such as post offices, police stations, airports, railway stations, national parks, schools, caravan parks, churches, hospitals etc. is also available. These features have proven to be extremely beneficial for those involved in planning and development.

For all the information you need regarding the optional Add-On Datapacks contact the National Information and Referral Service on **1300 135 070**.



## Socio-Economic Indexes for Areas (SEIFA) 2001

<b>cat. no.:</b>	2033.0.30.001-8
<b>Media:</b>	CD-ROM
<b>Cost:</b>	Varies
<b>Release Date:</b>	September 2003

Socio-Economic Indexes for Areas (SEIFA) 2001 is a product developed especially for those interested in the assessment of the welfare of Australian communities. The ABS has developed indexes to allow ranking of regions/areas, providing a method of determining the level of social and economic well-being in that region. The four indexes are:

- **Index of Advantage\Disadvantage** – A new index, and is a continuum of advantage to disadvantage. Low values indicate areas of disadvantage; and high values indicate areas of advantage.
- **Index of Disadvantage** – This index is derived from attributes such as income, educational attainment, unemployment, and dwellings without motor vehicles. In particular it focuses on low income earners, relatively lower educational attainment and high unemployment.
- **Index of Economic Resources** – This index includes variables that are associated with economic resources. Variables include rent paid, income by family type, mortgage payments, and rental properties.
- **Index of Education and Occupation** – This index includes all education and occupation variables only.

These indexes show where the affluent (as opposed to just high income earning) live; where disadvantaged (as opposed to the unemployed) live; and where the highly skilled and educated (as opposed to the tertiary educated people) live.

SEIFA 2001 provides information and rankings for a wide range of geographic areas from small areas such as a Collection Districts (CD) (approximately 225 households), Postal Areas, Local Government Areas (LGA), and Statistical Local Areas (SLA), to large areas such as Statistical Subdivisions (SSD). Alternatively, areas can be tailored to users' specifications.

**SEIFA 2001** is available as a stand-alone product or as an Add-On module for use with **CDATA 2001 – Full GIS** and **CDATA 2001 – Quickbuild**.

## Household Sample File

<b>cat. no.:</b>	2037.0
<b>Media:</b>	CD-ROM
<b>Cost:</b>	\$8,000.00
<b>Released:</b>	September 2003

The 2001 census Household Sample File (HSF) is a comprehensive Confidential Unit Record File (CURF) of census characteristics, containing a one per cent random sample of private households and associated persons, and a one per cent random sample of persons in non-private dwellings. The HSF is produced for model testing and statistical analysis. It is designed and produced after consultation with past users of Household Sample Files and other major users of census data. The structure of the CURF is similar to the 1996 HSF.

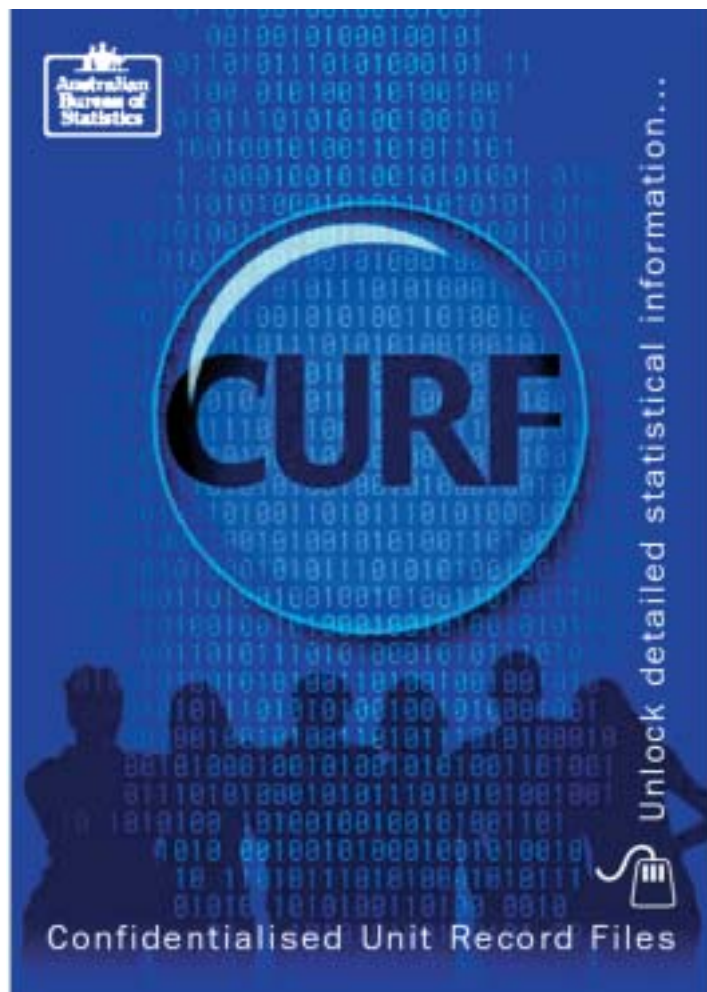
Most of the classificatory details available from the 2001 census are available on the HSF. However, some fields, such as birthplace, industry, occupation and qualification are collapsed to less detailed levels, in order to meet the ABS' confidentiality requirements.

The CURF contains information relating to three record types: dwellings, families and persons. The dwelling record covers topics such as dwelling type and structure, number of bedrooms, housing costs and number of motor vehicles. The family record includes family income and family type. The person record includes age, sex, birthplace, language, income, occupation, qualifications and labour force characteristics. Detailed documentation is provided with the CURF.

Two versions of the CURF are available: A Basic CURF available on CD-ROM or accessed through the Remote Access Data Laboratory (RADL), and an Expanded CURF available through the RADL only.

The RADL is an on-line database query system, under which microdata are held on a server at the ABS, to which users can submit programs to interrogate, analyse, model, etc. the data, and can access the results. For further information about this facility see the ABS web site, Access to ABS CURFs [www.abs.gov.au](http://www.abs.gov.au).

The RADL CURF contains similar information to the CD-ROM CURF, except some items are shown in more detail. Both the Basic CD-ROM and Expanded RADL versions of the CURF are available in SAS and SPSS.



# Community Profiles

*The Community Profile Series formats the detailed census data for small areas into tables. These tables contain the key census characteristics of persons, families and dwellings covering most topics on the census form. The profiles are excellent tools for researching, planning and analysing geographic areas, enabling comparisons to be made between different areas on a number of social, economic and demographic variables.*

*Community Profiles are available in hardcopy or electronic formats. The electronic Community Profiles are available in formats suitable for a range of spreadsheet and database packages. Free manipulation software, CProfile, which operates in a Windows environment can also be supplied with the Community Profiles in electronic format on request or can be downloaded from the ABS web site [www.abs.gov.au/census](http://www.abs.gov.au/census)*

## Community Profile Series

<b>cat. no.:</b>	2001.0 – 2006.0
<b>Media:</b>	Hardcopy/ electronic
<b>Cost:</b>	Varies according to area and profile
<b>Released:</b>	June 2002 – June 2003

### Basic Community Profile (cat. no. 20010-8)

The Basic Community Profile (BCP) provides detailed census data for small areas in 33 tables containing key census characteristics of persons, families and dwellings. The profile is available for all ASGC areas from Collection District (CD) level to all of Australia, and for the census specific geographic areas of Postal Areas, Suburbs and Commonwealth and State Electoral Divisions. The data is based on

the place of enumeration. The BCP was released in two phases.



The BCP for the main ASGC structure down to SLA level is available free on the ABS web site. All 33 tables in the Basic

Community Profiles have been available since November 2003.

### Indigenous Profile (cat. no. 2002.0-8)

The Indigenous Profile (IP) contains 29 tables that provide key census characteristics of Aboriginal and Torres Strait Islander persons, families and dwellings. Some tables provide comparisons with the non-Indigenous population. All tables within this profile



are available for the following geographic levels: ATSI Region, Indigenous Area, Local Government Area (LGA), Statistical Subdivision (SSD), Statistical Division (SD), States and Territories and Australia. Only tables I01, I02, I03, I13 and I29 are available at Statistical Local Area (SLA) and Indigenous Location levels. The data are based on place of enumeration. All 29 tables in the Indigenous Profiles have been available since November 2003.

### **Time Series Profile (cat. no. 2003.0-8)**

The Time Series Profile (TSP) contains 22 tables comparing data from the 1991, 1996 and 2001 censuses where the classifications are comparable, and is based on 2001 Statistical Local Area (SLA) boundaries. In the Time Series Profile some classifications have been redefined to obtain data comparability between censuses. Footnotes have been added to the tables to indicate these concordances. This Profile is available for the following geographic levels: Statistical Local Area (SLA), Local Government Area (LGA), Statistical Subdivision (SSD), Statistical Division (SD), Statistical District, States and Territories and Australia.

### **Usual Residents Profile (cat. no. 2004.0-8)**

The Usual Residents Profile (URP) contains 28 tables based on place of usual residence, and differs from the other Community Profiles in that it provides data based on where people 'usually' live or their 'usual address' rather than where they were counted on census night. This Profile is available for the following

geographic levels: Statistical Local Area (SLA), Local Government Area (LGA), Statistical Subdivision (SSD), Statistical Division (SD), Statistical District, Postcode, States and Territories and Australia.

### **Expanded Community Profile (cat. no. 2005.0-8)**

The Expanded Community Profile (XCP) contains 49 tables. It is the most comprehensive Community Profile in the series, comprising more detailed versions of some of the BCP tables, plus additional tables. This profile is available for the following geographic levels: Statistical Local Area (SLA), Local Government Area (LGA), Statistical Subdivision (SSD), Statistical Division (SD), Statistical District, States and Territories and Australia.

### **Working Population Profile (cat. no. 2006.0)**

The Working Population Profile (WPP) contains 19 tables of labour force and related data on the characteristics of employed people. This Profile is available for the following geographic levels: Journey to Work (JTW) Study Area, Statistical Local Area (SLA), Local Government Area (LGA), Statistical Subdivision (SSD), Statistical Division (SD), Statistical District, States and Territories and Australia.

## Classification Counts

<b>cat. no.:</b>	2022.0
<b>Media:</b>	Hardcopy/electronic
<b>Cost:</b>	Varies according to area
<b>Released:</b>	June 2002 (release 1) November 2002 (release 2)

The 2001 Classification Counts provide frequency counts for the 2001 census variables in full classificatory detail. These are cross-classified by sex where applicable and are available for each State and Territory and Capital City Statistical Division. They are available via the ABS web site for a nominal fee.

## Census Basics

<b>cat. no.:</b>	2045.0.30.001 – 8
<b>Media:</b>	CD-ROM
<b>Cost:</b>	Varies according to area (see price table)
<b>Released:</b>	June 2002 (release 1) November 2002 (release 2)

This product is a practical solution for those users who have existing database or analysis systems, those who require the data only or those who pre-purchased a CDATE 2001 product and wished to gain access to the data before the software was released. It is suited to users who do not require the functionality and convenience that the CDATE software provides.

Census Basics is a data-only CD-ROM product containing 2001 census Basic Community Profile (BCP) data, down to Collection District (CD) level, and digital boundaries in generic formats. Census Basics is available for purchase for all of Australia or for individual states and territories.

The BCP data and digital boundaries are provided in MapInfo Interchange (.mid/.mif) format. The BCP data files contain strings of table cell counts separated by commas and are not formatted tables as presented in standard census products.

For users with access to Microsoft Excel, the BCP data can be displayed in this product as formatted tables via a simple display tool. Users will require additional IT programming resources to incorporate these files into existing systems. All necessary product metadata will be provided to assist programmers in this task but the nature of this task and resources required by users should not be underestimated.

Consistent with the two-phase release of 2001 census data, there were two releases of the Census Basics product. Purchasers receive both releases of *Census Basics* as part of the purchase and cannot order a single release of the product.

Census Basics contains:

- the entire Basic Community Profile
- the complete set of 2001 census Digital Boundaries

Data and digital boundaries are provided for CDs and Australian Standard Geographical Classification (ASGC) areas (excluding Urban Centres & Localities (UC/Ls)), plus the census specific geographic areas of Postal Areas and Suburbs and Commonwealth and State Electoral Divisions (CEDs & SEDs). Digital boundaries are also provided for Australian Indigenous Geographic Classification (AIGC) areas for use with separately purchased Indigenous data.

### 2001 Census Basics Pricing (inc. GST)

Census Basics Package	Price
Australia	\$6000
NSW	\$4800
VIC	\$4800
QLD	\$4800
SA	\$4300
WA	\$4300
TAS	\$3800
NT	\$3800
ACT	\$3800

# Information Consultancy

*The ABS has a team of Information Consultants who are able to assist with all your data needs, whether they relate to policy, planning, research or commercial analysis. They are able to advise on cross classifying, deriving and collating variables of interest, ensuring that the final product meets user needs. The consultants are able to provide expert advice and accurate information about the data required for your information solutions. Customised tables are a user pays service, with prices varying depending on the size and complexity of the data tables requested.*

*There is an ABS Information Consultancy team located in each State and Territory Office of the ABS. For further information contact the National Information and Referral Service (NIRS) on 1300 135 070 or email [client.services@abs.gov.au](mailto:client.services@abs.gov.au).*

## Customised Geographic Reports

<b>cat. no.:</b>	2036.0
<b>Media:</b>	Hardcopy/ electronic
<b>Cost:</b>	POA
<b>Released:</b>	June 2002

Census customised geographic data reports provide clients with tabular geographic data which relate specifically to the Census Geographic Areas. The data available in these reports are taken from the Collection District Record Database (CDRD). Three types of common geographic data reports can be provided using the following standardised reports:

- direct queries
- geographic conversions
- comparability listings

## Customised Mapping Service

<b>cat. no.:</b>	2922.0
<b>Media:</b>	Hardcopy/ electronic
<b>Cost:</b>	POA
<b>Released:</b>	Progressively from November 2002 to April 2003

Two types of customised mapping services are available through ABS Information Consultancy:

- Customised thematic mapping services
- Customised reference mapping services

The digital geographic data used in these two services are generally 2001 Census Boundaries and Basic Base Map (major roads, rivers and railways plus localities), although other data are used where appropriate or required by clients. Thematic maps are maps which show various geographic regions which are shaded or patterned to convey differences in a particular characteristic.

Reference maps show the boundaries and other non-statistical geographic information of particular geographic regions, usually in the context of the topographic features which define them. These types of maps are particularly important when using census data as they help to define the extent of the Census Geographic Areas. Customised reference maps are available to suit most client needs.

### Customised Profiles

<b>cat. no.:</b>	2021.0
<b>Media:</b>	Hardcopy/ electronic
<b>Cost:</b>	POA
<b>Released:</b>	June 2002

Census Community Profile data can be made available according to geographic areas specified by clients and/or component tables of interest and provided in either hard copy or electronic formats. Purchasers of Community Profile data on electronic media are offered a format compatible with a wide range of spreadsheets and databases. Manipulation software, CProfile, is provided free of charge on request with profiles disseminated in electronic form. This software enables clients to view, select, print and export selections from the profile.

### Customised Tables

<b>cat. no.:</b>	2031.0
<b>Media:</b>	Hardcopy/ electronic
<b>Cost:</b>	POA
<b>Released:</b>	June 2002

If standard 2001 census products and services cannot meet a particular user's needs, a customised table may provide the appropriate solution. Tables can be tailored to meet specific requirements and provide flexibility in the selection of any number of census variables for any geographic area.

Tables are available in hardcopy or electronic formats suitable for use in a range of spreadsheets and databases. Manipulation software, SuperTABLE, is provided free of charge on request with tables disseminated electronically. This software enables clients to view, select, print and export selections from the table.

To specify and order Census Customised Tables, see the Census Table Specification Service information in the Census on the Internet section on page 6.

# 2001 Census Data Items

*Census data was released in two phases. The first release contained a wide range of topics and was available for most geographic areas in June 2002.*

*Second release data was released progressively from November 2002.*

## First Release (June 2002)

### Person Characteristics

Age  
Ancestry  
Australian citizenship  
Birthplace of female parent  
Birthplace of individual  
Birthplace of male parent  
CD of usual residence census night  
Child type  
Computer use at home  
Family/household reference person indicator  
Full/part-time student status  
Highest level of schooling completed  
Indigenous status  
Individual income (weekly)  
Internet use  
Language spoken at home  
Proficiency in spoken English  
Proficiency in spoken English/language  
Registered marital status  
Relationship in household  
Religious affiliation  
Residential status in non-private dwelling  
Sex  
SLA of usual residence census night  
State of usual residence census night  
Type of educational institution attending  
Usual address indicator census night  
Year of arrival in Australia

### Household/Dwelling Characteristics

Count of persons temporarily absent from household  
Dwelling location  
Dwelling structure  
Dwelling type  
Household type  
Housing loan repayments (monthly) dollar values  
Housing loan repayments (monthly) ranges  
Landlord type  
Number of bedrooms in private dwellings  
Number of motor vehicles  
Number of motorbikes and scooters  
Rent (weekly) dollar values  
Rent (weekly) ranges  
Tenure type  
Type of non-private dwelling

### Family Characteristics

Count of dependent children under 15 temporarily absent  
Count of dependent students (15–24) temporarily absent  
Count of non-dependent children temporarily absent  
Count of persons temporarily absent from family  
Family number  
Family type  
Location of spouse  
Relationship between families

## Second Release (November 2002)

### Person Characteristics

Hours worked  
Industry of employment  
Industry sector  
Journey to work: destination zone  
Journey to work: study area  
Labour force status/status in employment  
Method of travel to work  
Non-school qualification: field of study  
Non-school qualification: level of education  
Non-school qualification: year completed  
Occupation  
Postal area of usual address census night  
SLA of usual residence five years ago  
SLA of usual residence one year ago  
Social marital status  
State of usual residence five years ago  
State of usual residence one year ago  
Usual address five years ago indicator  
Usual address one year ago indicator

### Household/Dwelling Characteristics

Household income derivation indicator  
Household income (weekly)  
Household five year mobility indicator  
Household one year mobility indicator

### Family Characteristics

Family income derivation indicator  
Family income (weekly)

## Topic Index

*This topic index is provided as a ready reference to identify the classifications (variables) available for a particular topic. For each topic listed, the names and mnemonics for all relevant classifications are shown. Once the name of a classification has been identified, full details of the component categories and the population for which the classification is applicable can be found in the alphabetic listing of 2001 Census Classifications.*

TOPIC	MNEMONIC	CLASSIFICATIONS
Aboriginal/ TorresStrait Islander	INGP	Indigenous Status
Age	AGEP	Age
Ancestry	ANCP BPFP BPMP YARP LANP	Ancestry Birthplace of Female Parent Birthplace of Male Parent Year of Arrival in Australia Language Spoken at Home (See also Ethnicity)
Bedrooms	BEDD	Number of Bedrooms in Private Dwelling
Birthplace	BPFP BPLP BPMP	Birthplace of Female Parent Birthplace of Individual Birthplace of Male Parent
Caravans	DLOD DWTD STRD	Dwelling Location Dwelling Type Dwelling Structure
Children	CDCAF CDSAF CNDAF CTPP RLHP STUP	Count of Dependent Children Under 15 Temporarily Absent Count of Dependent Students (15-24) Temporarily Absent Count of Non-Dependent Children Temporarily Absent Child Type Relationship in Household Full/Part - Time Student Status
Citizenship	CITP YARP	Australian Citizenship Year of Arrival in Australia
Computing	COMP NETP	Computer Use at Home Internet Use



TOPIC	MNEMONIC	CLASSIFICATIONS
Dwelling	BEDD	Number of Bedrooms in Private Dwelling
	DLOD	Dwelling Location
	DWTD	Dwelling Type
	HLRD	Housing Loan Repayments (monthly) dollar values
	HLRD01	Housing Loan Repayments (monthly) ranges
	LLDD	Landlord Type
	NPDD	Type of Non-Private Dwelling
	RNTD	Rent (weekly)
	RNTD01	Rent (weekly) ranges
	STRD	Dwelling Structure
TEND	Tenure Type	
Education	HSCP	Highest Level of Schooling Completed
	QALFP	Non-School Qualification: Field of Study
	QALLP	Non-School Qualification: Level of Education
	QALYP	Non-School Qualification: Year Completed
	STUP	Full/PartTime Student Status
	TYPP	Type of Educational Institution Attending
Employment		See Labour Force
Ethnicity	ANCP	Ancestry
	BPFP	Birthplace of Female Parent
	BPLP	Birthplace of Individual
	BPMP	Birthplace of Male Parent
	ENGP	Proficiency in Spoken English
	ENGP01	Proficiency in Spoken English/Language
	INGP	Indigenous Status
	LANP	Language Spoken at Home
	RELP	Religious Affiliation
	YARP	Year of Arrival in Australia
Family	CDCAF	Count of Dependent Children Under 15 Temporarily Absent
	CDSAF	Count of Dependent Students (15–24) Temporarily Absent
	CNDAF	Count of Non-Dependent Children Temporarily Absent
	CPAF	Count of Persons Temporarily Absent from Family
	CTPP	Child Type
	FIDF	Family Income Derivation Indicator
	FMTF	Family Type
	FNOF	Family Number

TOPIC	MNEMONIC	CLASSIFICATIONS
	FRLF	Relationship Between Families
	HHTD	Household Type
	MDCP	Social Marital Status
	MSTP	Registered Marital Status
	RPIP	Family/Household Reference Person Indicator
	RLHP	Relationship in Household
	SPLF	Location of Spouse
Father	BPMP	Birthplace of Male Parent
Female	BFPF	Birthplace of Female Parent
	SEXP	Sex
Group Households	CPAD	Count of Persons Temporarily Absent from Household
	HHTD	Household Type
	RLHP	Relationship in Household
Hours Worked	HRSP	Hours Worked (See also Labour Force)
Household	DWTD	Dwelling Type
	HHTD	Household Type
	HIDD	Household Income Derivation Indicator
	HIND	Household Income
	RPIP	Family/Household Reference Person Indicator
	MV1D	Household One Year Mobility Indicator
	MV5D	Household Five Year Mobility Indicator
	RLHP	Relationship in Household
Housing Costs	HLRD	Housing Loan Repayments (monthly) dollar values
	HLRD01	Housing Loan Repayments (monthly) ranges
	RNTD	Rent (weekly) dollar values
	RNTD01	Rent (weekly) ranges
Housing Loan Repayments	HLRD	Housing Loan Repayments (monthly) dollar values
	HLRD01	Housing Loan Repayments (monthly) ranges
Immigration	BFPF	Birthplace of Female Parent
	BPLP	Birthplace of Individual
	BPMP	Birthplace of Male Parent
	ENGP	Proficiency in Spoken English
	ENGP01	Proficiency in Spoken English/Language
	LANP	Language Spoken at Home
	YARP	Year of Arrival in Australia

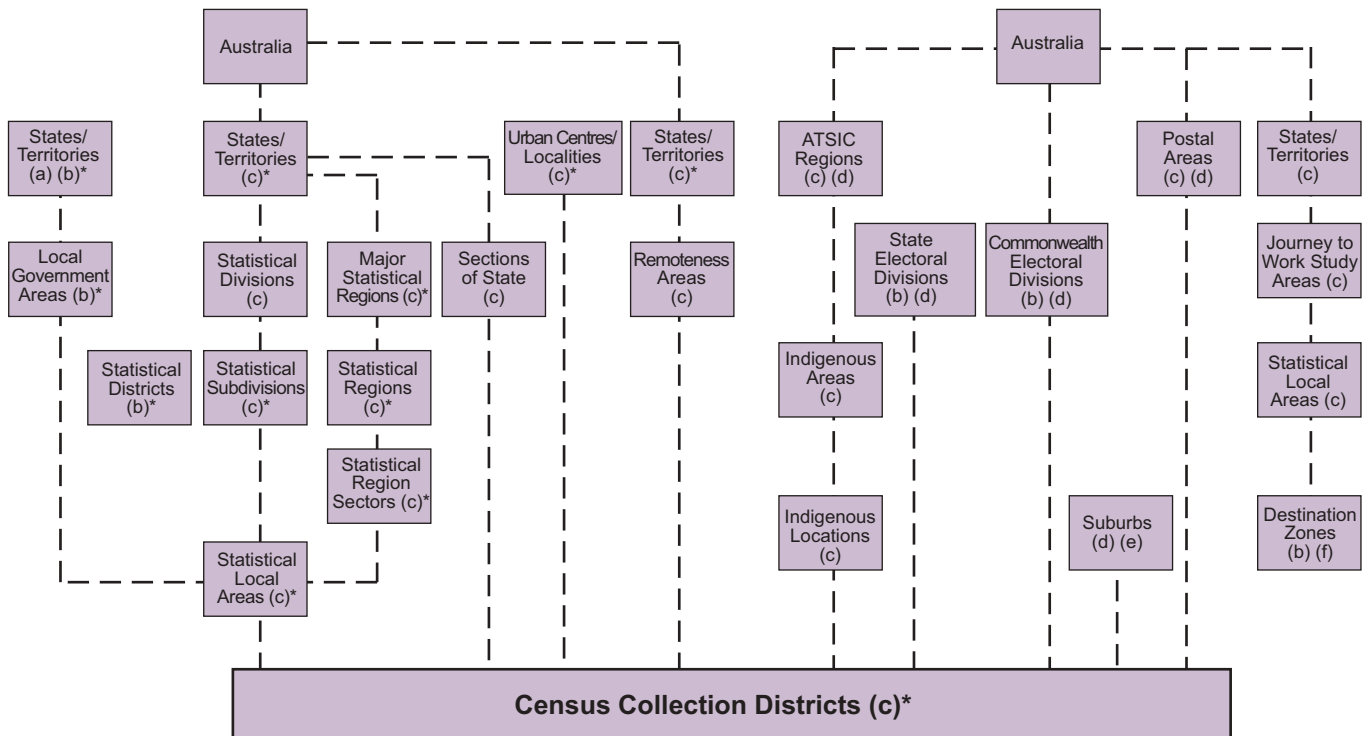
TOPIC	MNEMONIC	CLASSIFICATIONS
Income	FIDF	Family Income Derivation Indicator
	FINF	Family Income
	HIDD	Household Income Derivation Indicator
	HIND	Household Income
	INCP	Individual Income (weekly)
Indigenous	INGP	Indigenous Status
	ANCP	Ancestry
Industry	GNGP	Industry Sector
	INDP	Industry of Employment
Internal Migration	MV1D	Household One Year Mobility Indicator
	MV5D	Household Five Year Mobility Indicator
	SLAUCP	SLA of Usual Residence Census Night
	SLAU1P	SLA of Usual Residence One Year Ago
	SLAU5P	SLA of Usual Residence Five Years Ago
	STEUCP	State of Usual Residence Census Night
	STEU1P	State of Usual Residence One Year Ago
STEU5P	State of Usual Residence Five Years Ago	
Internet	NETP	Internet Use
Journey to Work	JTWDZNP	Journey to Work: Destination Zone
	JTWSAP	Journey to Work: Study Area
	MTWP	Method of Travel to Work
Labour Force	JTWDZNP	Journey to Work: Destination Zone
	JTWSAP	Journey to Work: Study Area
	GNGP	Industry Sector
	HRSP	Hours Worked
	INCP	Individual Income (weekly)
	INDP	Industry of Employment
	LFSP	Labour Force Status/ Status in Employment
	MTWP	Method of Travel to Work
OCCP	Occupation	
Landlord		See Dwelling
Language	ENGP	Proficiency in Spoken English
	ENGP01	Proficiency in Spoken English/Language
	LANP	Language Spoken at Home

TOPIC	MNEMONIC	CLASSIFICATIONS
Lone Person	HHTD	Household Type
	RLHP	Relationship in Household
Male	BPMP	Birthplace of Male Parent
	SEXP	Sex
Marital Status	MDCP	Social Marital Status
	MSTP	Registered Marital Status
	RLHP	Relationship in Household
	SPLF	Location of Spouse
Method of Travel to Work	JTWDZNP	Journey to Work: Destination Zone
	TWSAP	Journey to Work: Study Area
	MTWP	Method of Travel to Work
Mobility	MV1D	Household One Year Mobility Indicator
	MV5D	Household Five Year Mobility Indicator (See also Usual Residence)
Mortgage		See Housing Costs
Mother	BFPF	Birthplace of Female Parent
Motor Vehicles	MCYCD	Number of Motorbikes and Scooters
	VEHD	Number of Motor Vehicles
Non-Private Dwelling	DWTD	Dwelling Type
	NPDD	Type of Non-Private Dwelling
	RLNP	Residential Status in a Non-Private Dwelling
Occupation	OCCP	Occupation
Overseas Visitors		Note: Only Age (AGEP), Sex (SEXP) and Registered Marital Status (MSTP) are collected for overseas visitors.
Postal Area	POCUCP	Postal Area of Usual Address on Census Night
Qualifications	QALFP	Non-School Qualification: Field of Study
	QALLP	Non-School Qualification: Level of Education
	QALYP	Non-School Qualification: Year Completed
	STUP	Full/PartTime Student Status
	TYPF	Type of Educational Institution Attending
Relationship	FRLF	Relationship Between Families
	MDCP	Social Marital Status
	MSTP	Registered Marital Status
	RLHP	Relationship in Household
	RLNP	Residential Status in Non-Private Dwelling
Religion	RELP	Religious Affiliation

TOPIC	MNEMONIC	CLASSIFICATIONS
Rent	RNTD	Rent (weekly) dollar values
	RNTD01	Rent (weekly) ranges
School		See Education
Sex	SEXP	Sex
State	STEUCP	State of Usual Residence Census Night
	STEU1P	State of Usual Residence One Year Ago
	STEU5P	State of Usual Residence Five Years Ago
Statistical Local Area (SLA)	SLAUCP	SLA of Usual Residence Census Night
	SLAU1P	SLA of Usual Residence One Year Ago
	SLAU5P	SLA of Usual Residence Five Years Ago
Structure	STRD	Dwelling Structure.
Student	HSCP	See also Dwelling, Family and Household Highest Level of Schooling Completed
	QALFP	Non-School Qualification: Field of Study
	QALLP	Non-School Qualification: Level of Education
	QALYP	Non-School Qualification: Year Completed
	STUP	Full/PartTime Student Status
	TYPP	Type of Educational Institution Attending
Temporary Absentees	CPAD	Number of Persons Temporarily Absent from Household
	CPAF	Count of Persons Temporarily Absent from Family
	CDCAF	Count of Dependent Children Under 15 Temporarily Absent
	CDSAF	Count of Dependent Students (15ç24) Temporarily Absent
	CNDAF	Count of Non-Dependent Children Temporarily Absent
	SPLF	Location of Spouse
Torres Strait Islander	INGP	Indigenous Status
Usual Residence	CDUCP	CD of Usual Residence Census Night
	POCUCP	Postal Area of Usual Residence Census Night
	SLAUCP	SLA of Usual Residence Census Night
	SLAU1P	SLA of Usual Residence One Year Ago
	SLAU5P	SLA of Usual Residence Five Years Ago
	STEUCP	State of Usual Residence Census Night
	STEU1P	State of Usual Residence One Year Ago
	STEU5P	State of Usual Residence Five Years Ago
	UAICP	Usual Address Indicator Census Night

TOPIC	MNEMONIC	CLASSIFICATIONS
	UAI1P	Usual Address One Year Ago Indicator
	UAI5P	Usual Address Five Years Ago Indicator
Vehicles		See Motor Vehicles
Visitors	HHTD	Household Type
	RLHP	Relationship in Household
		See also Overseas Visitors, Usual Residence
Work		See Journey to Work
Destination Zone		
Year of Arrival	YARP	Year of Arrival in Australia

# 2001 Geographic Structure



Note: (a) Incorporated areas only. (b) Cover part of Australia only. (c) Cover all of Australia. (d) Approximations created by aggregating Collection Districts (CDs). (e) Only available for specific areas within the specified States/Territories. (f) Destination Zones do not concord with CDs, but they do aggregate to Statistical Local Areas. (\*) Usual residence data are available at the CD level, and for aggregation of CDs.

# Common Census Terms

## Population Counts

### Place of enumeration

The population count for place of enumeration is a count of every person who spent census night in Australia based on where they were counted, which may not be where they usually live. This count, also known as a de facto population count, includes overseas visitors, people on board vessels in or between Australian ports, on long-distance trains, buses or aircraft, but excludes Australian residents temporarily overseas. Place of enumeration data are available for all standard census geographic areas including Collection District (CD). Most census data are published on the basis of place of enumeration.

### Place of usual residence

Place of usual residence is where a person usually lives rather than the place where they were counted on census night. Each person is required to state the address where they usually live in Question 7 of the census form. This count of persons at their usual residence is known as the de jure population count. It excludes overseas visitors and Australian residents temporarily overseas. Census counts compiled on this basis are less likely to be influenced by seasonal factors such as school holidays and snow seasons, and provide information about the usual residents of an area. The 2001 census is the first census where usual residence data

will be available, on request, at Collection District (CD) level.

## The Estimated Resident Population (ERP)

The Estimated Resident Population (ERP) is the official ABS estimate of the Australian population. The ERP is based on results of the population census and is compiled as at 30 June of each census year and updated quarterly between censuses. These intercensal estimates of the resident population are revised each time a population census is taken. In the compilation of the ERP, the following three important adjustments are made to the census count based on place of usual residence:

- an adjustment for the census undercount using results of the Post Enumeration Survey
- the inclusion of an estimated number of Australian residents who were temporarily overseas on census night
- backcasting of the resulting estimates which relate to 7 August 2001 to 30 June 2001 using births, deaths and migration data

## Undercounting

Although every effort is made by census collectors to locate every dwelling and household within their allocated district, some dwellings may be missed.

Undercount is also possible if not all members of a household are included on



the census form. A small number of people and dwellings are therefore missed and some may have been counted more than once. The net result is termed undercounting or underenumeration. A measure of the extent of undercounting is obtained from the Post Enumeration Survey.

## Geography

### Geographic Areas

The geographic areas used for the collection and dissemination of census data are divided into two types: Australian Standard Geographical Classification (ASGC) and Census Geographic Areas. Census data are collected for small areas called Collection Districts (CD). This Collection District base allows the aggregation of data into larger areas, for example, Statistical Local Areas (SLA), Suburbs and Electoral Divisions.

### Australian Standard Geographical Classification

The Australian Standard Geographical Classification (ASGC) is a hierarchically structured classification used by the ABS for the classification of spatial units by geographic areas within Australia. The ASGC areas used for census purposes are:

- Collection District (CD)
- Statistical Local Area (SLA)
- Local Government Area (LGA)
- Statistical Subdivision (SSD)
- Statistical Division (SD)
- Statistical District (SDIST)
- Statistical Region Sector (SRS)
- Statistical Region (SR)
- Major Statistical Region (MSR)
- Urban Centre/Locality (UC/L)
- Section of State (SOS)

Remoteness Area (RA)  
State/Territory (S/T)

There is a separate entry in this list of common census terms defining some of these geographic areas.

### Census Geographic Areas

The Census Geographic Areas comprise the following census specific (non ASGC) geographical areas:

- Commonwealth Electoral Division (CED)
- State Electoral Division (SED)
- Postal Area (POA)
- State Suburb (SSC)
- ATSI Region (AREG)
- Indigenous Area (IARE)
- Indigenous Location (ILOC)
- Destination Zone (JTWDZN)
- Journey to Work Study Area (JTW)

Census statistical data and digital boundary data are readily available for all of these areas. Census data for these areas are aggregated from Collection District (CD) level, except for Destination Zones and Journey to Work Study Areas (JTW).

### Collection District

The Collection District (CD) is the smallest geographic area defined in the Australian Standard Geographical Classification (ASGC). It has been designed for use in the Census of Population and Housing as the smallest unit for collection, processing and output of data (except for some Work Destination Zones). CDs also serve as the basic building block in the ASGC and are used for the aggregation of statistics to larger census geographic areas. For the 2001 census there is an average of about 225 dwellings in each CD.

## Postal Area

Postal Areas are approximations of Australia Post postcodes and are created by allocating CDs to existing postcodes on a 'best fit' basis. A Postal Area boundary is then created to encompass all of the allocated CDs and the data for the CDs are aggregated to form Postal Area data. Some postcodes are not mappable and are excluded from postal areas. These include: codes reserved for post office boxes

- delivery routes within other postcodes (common in rural areas)
- postcodes for which no CD is included by the "best fit" method

## Electoral Division

An Electoral Division is an area legally prescribed for the purpose of returning one member (or more in the case of the Tasmanian House of Assembly and the Australian Capital Territory Legislative Assembly) to the Federal, State or Territory Lower Houses of Parliament. Queensland has only one House of Parliament at the State level with each member representing an electoral district. Electoral Divisions are approximated by aggregating the data for CDs that lie wholly or partly within the area. Commonwealth Electoral Divisions (CEDs) have different boundaries to State Electoral Divisions (SEDs) except in Tasmania and the ACT where they are the same. CEDs cover all of Australia.

## Local Government Area

The Local Government Area (LGA) is a geographical area under the responsibility of an incorporated local government council, or an incorporated Community Government Council of sufficient size and statistical significance in the Northern Territory. The LGAs in Australia

collectively cover only a part of Australia. The main areas not covered by LGAs are the extensive northern parts of South Australia, a large part of the Northern Territory, all of the Australian Capital Territory and the other territories. The number of LGAs and their boundaries can change over time. Their creation and delimitation is the responsibility of the respective state/territory governments, and are governed by the provisions of state/territory local government acts. The LGAs applicable to the 2001 census output are those which existed at 7 August, 2000. This early cut off date allows time for the census mapping to be completed.

## Statistical Local Area

Statistical Local Areas (SLA) are areas defined in the Australian Standard Geographical Classification which consist of one or more CDs. They can be based on LGAs, or parts thereof, or any unincorporated area. They cover, in aggregate, the whole of Australia without gaps or overlaps.

## Statistical Division

A Statistical Division (SD) is an Australian Standard Geographical Classification (ASGC) defined area which represents a large, general purpose, regional type geographic area. SDs represent relatively homogeneous regions characterised by identifiable social and economic links between the inhabitants and between the economic units within the region, under the unifying influence of one or more major towns or cities. They consist of one or more Statistical Subdivisions (SSDs) and cover, in aggregate, the whole of Australia without gaps or overlaps. They do not cross state or territory boundaries and are the

largest statistical building blocks of states and territories.

### **Urban Centre/Locality**

An Urban Centre is generally defined as a population cluster of 1,000 or more people. A Locality is generally defined as a population cluster of between 200 and 999 people. People living in Urban Centres are classified as urban for statistical purposes while those in Localities are classified as rural (i.e. non-urban). Each Urban Centre and/or Locality (UC/L) is bounded (i.e. a boundary for it is clearly defined) and composed of one or more whole CDs. UC/Ls are defined for each census and are current for the date of the census. The criteria for bounding UC/Ls are based on the Linge methodology.

# Release Dates

## Products and Services available from the 2001 Census

### Census Reference Products

Census Dictionary		April 2001
Directory of Census Statistics	1st issue	Early 2002
	last issue	Late 2003
The Census Guide	1st issue	Late 2001
	last issue	Late 2003
Digital boundaries		Progressively from early 2002
Other geographic reference data		Early 2002
Census CD maps		Early 2002
Census SLA maps		Early 2002

### Census Geography Publications

Census edition of Australian Standard Geographic Classification (ASGC)		Sept 2001
Non-ASGC Census geography		Early 2002
Urban Centres and Localities		Oct 2002

### Census Customised Data Services

Advance Order Service in conjunction with Census Table Specification Service		Available from Early Sept 2001
Customised Table delivery		From July 2002

### Census Data Products

First Release Basic Community Profile		June 2002
First Release Indigenous Profile		June 2002
National Selected Characteristics (first release) for SDs		June 2002
Census Basics (first release)		June 2002
Census Snapshots (first release)		June 2002
First Release Classification Counts		Aug 2002
CDATA 2001 Release 1 (Digital boundaries & map data, 1991 & 1996 Time Series data on 2001 boundaries and first release Basic Community Profile)		Sept 2002
State/Territory Selected Characteristics for SLAs		Sept 2002
Social Atlases		Oct 2002 – Feb 2003
CLIB 2001 Release 1 (first release Basic Community Profile)		Nov 2002
Second Release Basic Community Profile		Nov 2002
Second Release Indigenous Profile		Nov 2002
Census Basics (final release)		Nov 2002
Census Snapshots (second release)		Nov 2002
Second Release Classification Counts		Dec 2002
Time Series Profile		Jan 2003
Selected Characteristics (second release) for SLAs		Feb 2003
Selected Characteristics for Urban Centres/Localities		March 2003
Usual Residents Profile		March 2003
CLIB 2001 Release 2 (second release Basic Community Profile & Time Series Profile)		April 2003
Expanded Community Profile		May 2003
CDATA 2001 Release 2 (second release Basic Community Profile & Time Series Profile)		June 2003
Working Population Profile		June 2003
Household Sample File		Sept 2003
SEIFA 2001		Oct 2003
CLIB 2001 Release 3		Nov 2003
ACAP Publications		Sept – Dec 2003

# contacts

For more information about the census, or to discuss information needs, please use one of the contact sources listed below.

## **ABS Web site – [www.abs.gov.au](http://www.abs.gov.au)**

The census pages on the ABS web site contain a wide range of census data, information and reference material. Refer to the Census on the Internet section on page 4 of this directory to view the range of material available.

## **ABS National Information and Referral Service (NIRS)**

NIRS consultants can assist with straightforward information requests and refer queries where necessary.

Phone: 1300 135 070  
email: [client.services@abs.gov.au](mailto:client.services@abs.gov.au)  
Fax: 1300 135 211

You can also subscribe to census publications (in hardcopy or electronic form). Call the National Subscription Services on 1300 366 323.

## **Ordering ABS Publications**

If you wish to purchase any of the publications listed, please visit our web site, or contact our NIRS team, who can direct you to the nearest bookshop or to the ABS mail order service. All prices are GST inclusive.

## **ABS Shopfronts**

ABS has a shopfront in each capital city for information regarding the full range of products and services. Some carry a range of publications and products for sale.

**New South Wales**  
5th Floor,  
St Andrews House  
Sydney Square  
Sydney NSW 2000

**South Australia**  
7th Floor,  
Commonwealth Centre  
55 Currie St  
Adelaide SA 5000

**Victoria**  
Level 5,  
Commercial Union Tower  
485 La Trobe St  
Melbourne Vic 3000

**Tasmania**  
Ground Floor,  
200 Collins St  
Hobart Tas 7000

**Queensland**  
18th Floor,  
313 Adelaide St  
Brisbane Qld 4000

**Northern Territory**  
7th Floor,  
AANT Building  
81 Smith St  
Darwin NT 0800

**Western Australia**  
Level 16,  
Exchange Plaza  
2 The Esplanade  
Perth WA 6000

**Australian Capital Territory**  
Level 5,  
QBE Insurance Building  
33-35 Ainslie Avenue  
Canberra City ACT 2601

## **Local Libraries**

The ABS provides access to a range of census and other statistics to the general community through the Australian Library Network. Members of the ABS Library Extension Program (LEP) and eligible libraries are kept up to date with newsletters and free products from the ABS including many Census products. See the ABS LEP section on page 3 and the CLIB section on page 5 for further information or contact your local library.